

**TAVOLA RICAMBI
TABLEAU PIECES DETACHEES
SPARE PARTS TABLE
ERSATZTEILTAFEL
TABLA DE REPUESTOS
TABUA PEÇAS DE TROCA**

SERIE 1. IM

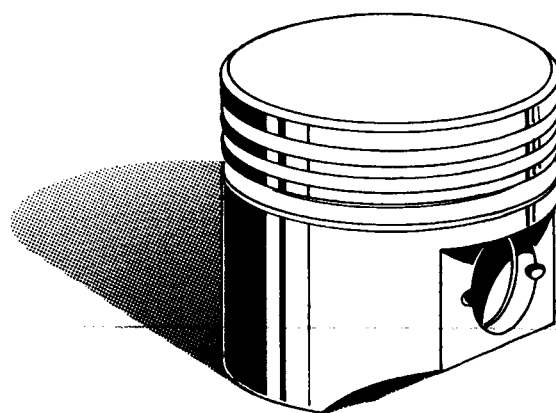
250 - 251 - 252

300 - 300 - 302

350 - 351 - 352

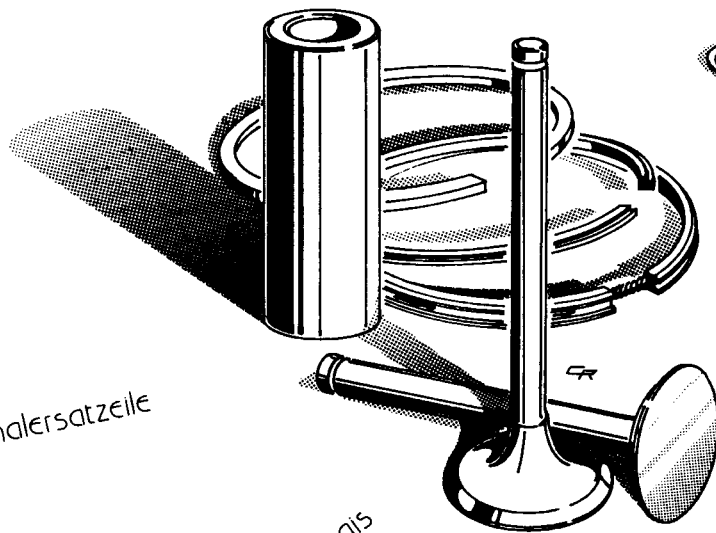
359 - 359 "CEE"

standard & restyling



Ricambi originali

Pièces d'origine



Repuestos originales

Originalersatzteile

Recâmbios originais

Genuine spare parts

 **intermotor**

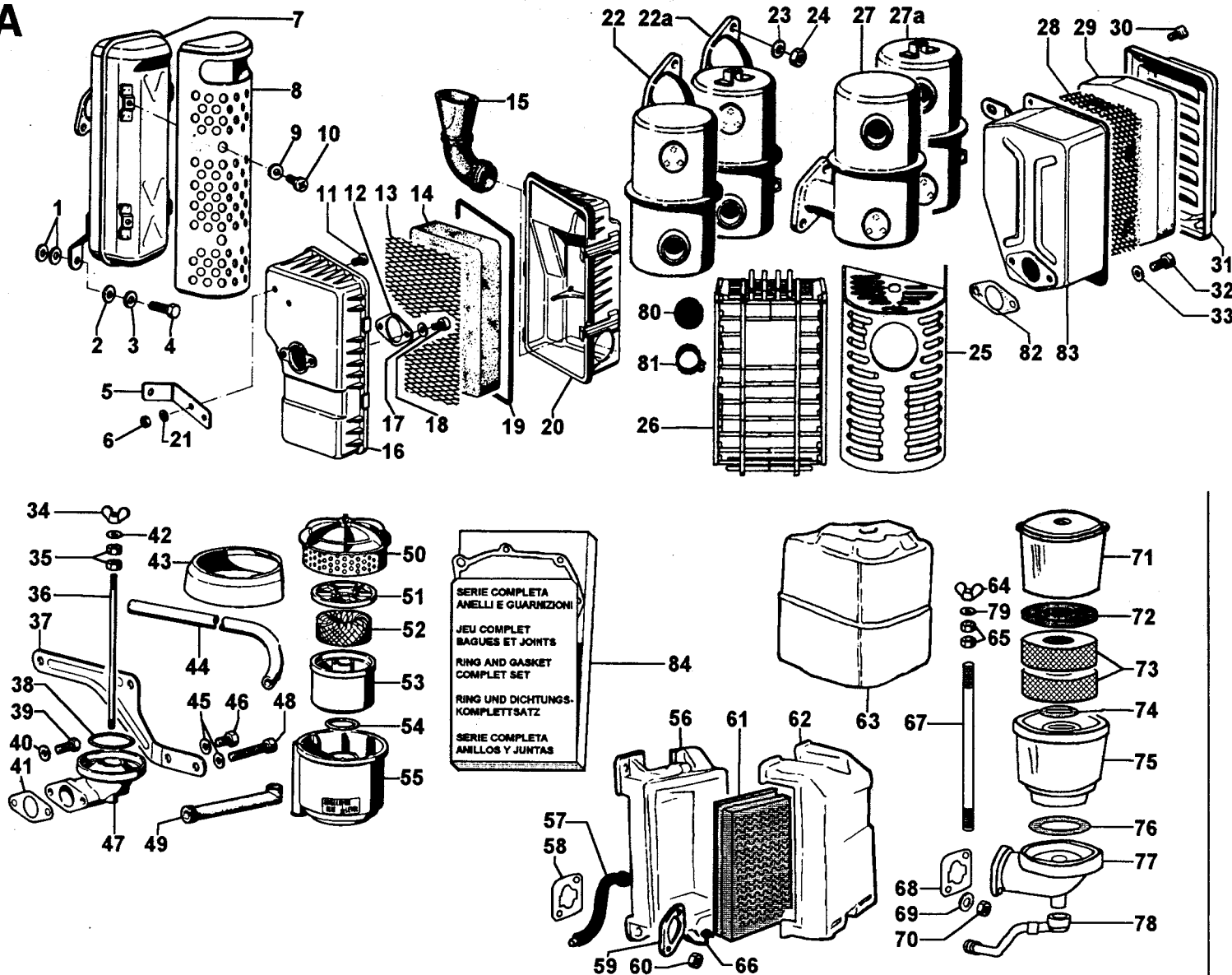
by  **LOMBARDINI**

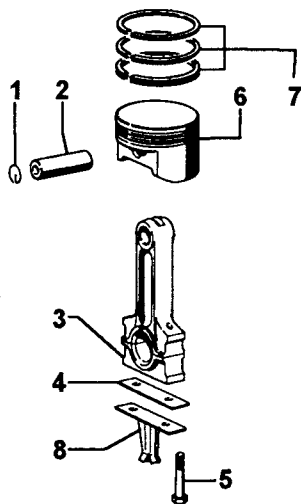
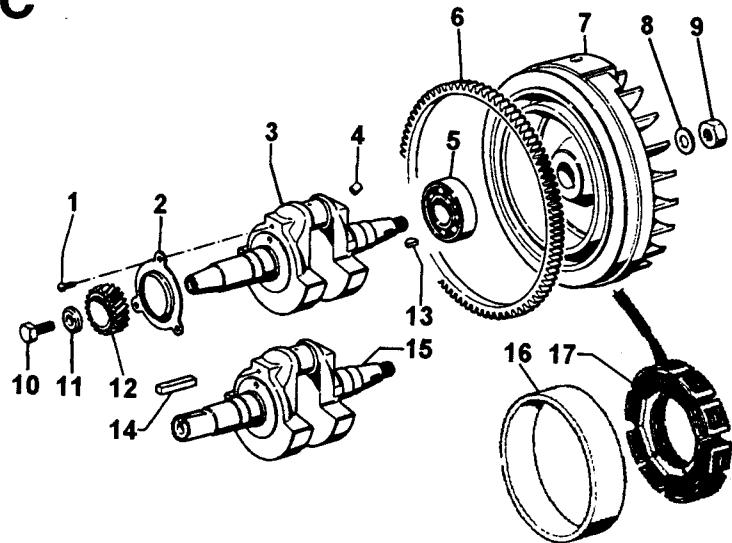
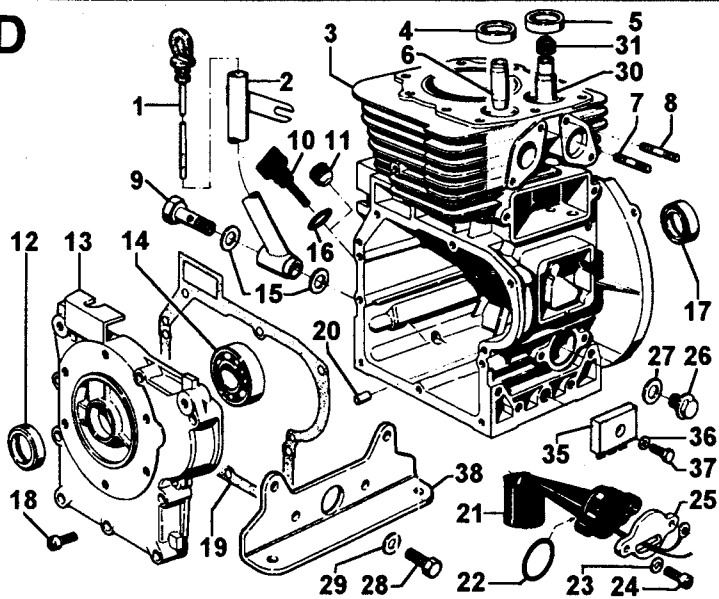
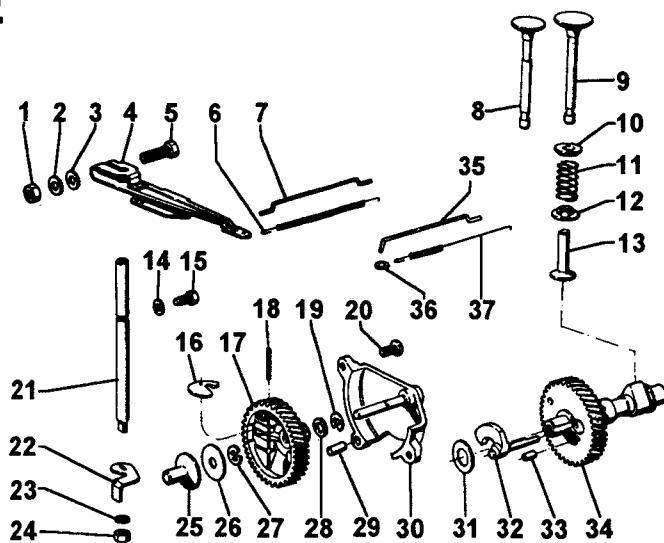
**RICAMBI PER MOTORE STANDARD.
PER APPLICAZIONI SPECIALI
CONSULTARE IL CATALOGO PRESSO I
CENTRI ASSISTENZA E RICAMBI.**

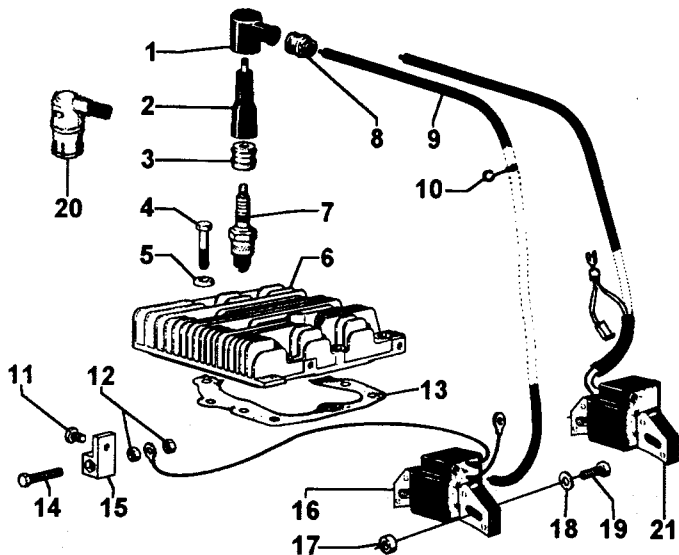
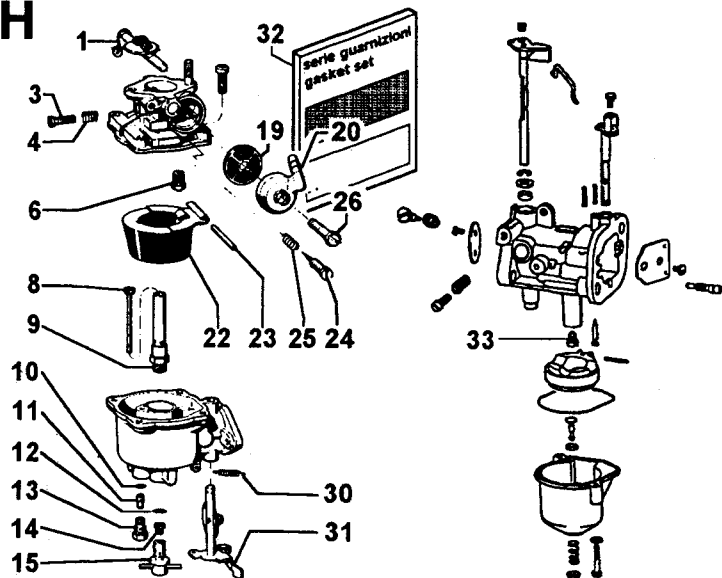
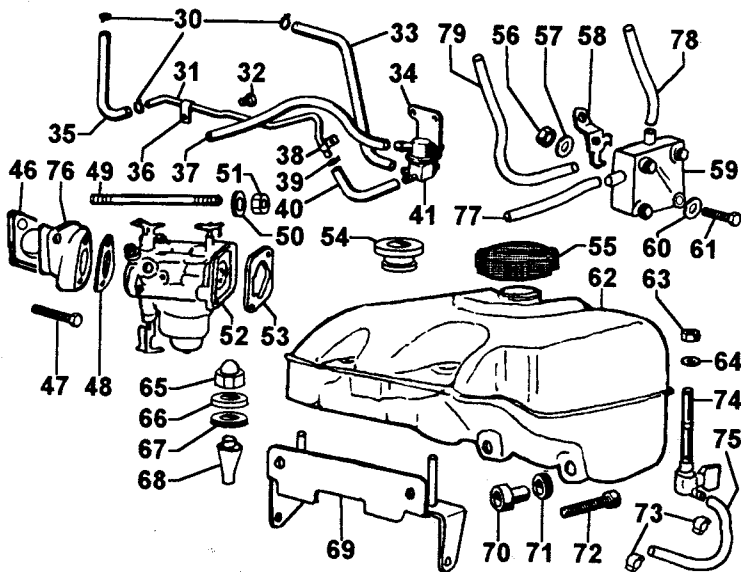
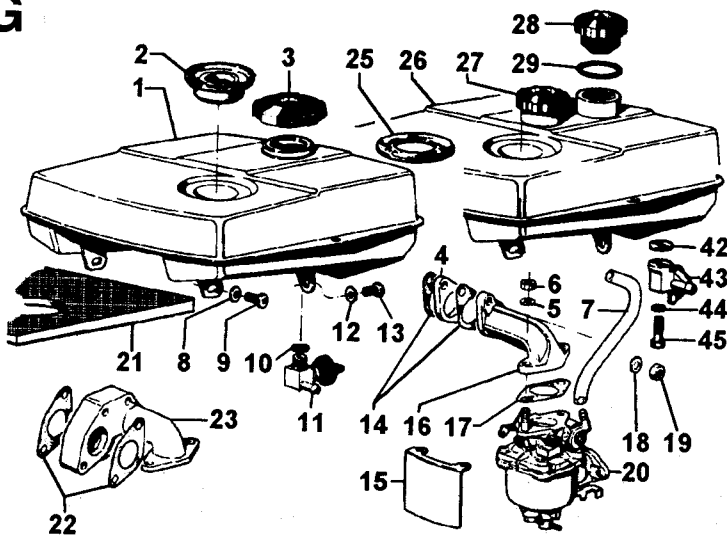
**PIECES POUR DES MOTEURS
STANDARD.
POUR LES ADAPTATIONS CONSULTER
LE CATALOGUE AUPRES DES AGENTS
SERVICE.**

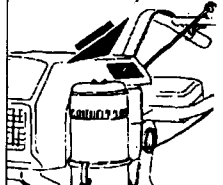
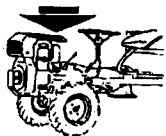
**SPARE PARTS FOR STANDARD
ENGINE.
FOR SPECIAL APPLICATIONS SEE
MASTER CATALOG AT SERVICE
CENTERS.**

A

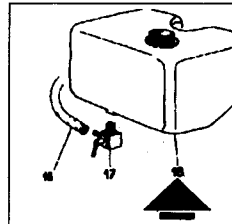
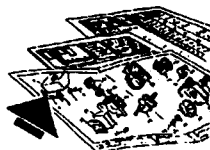


B**C****D****E**

F**H****G**

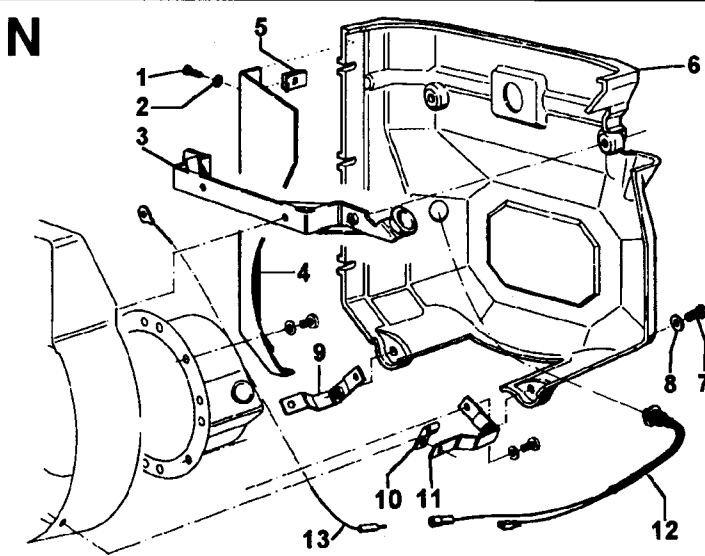
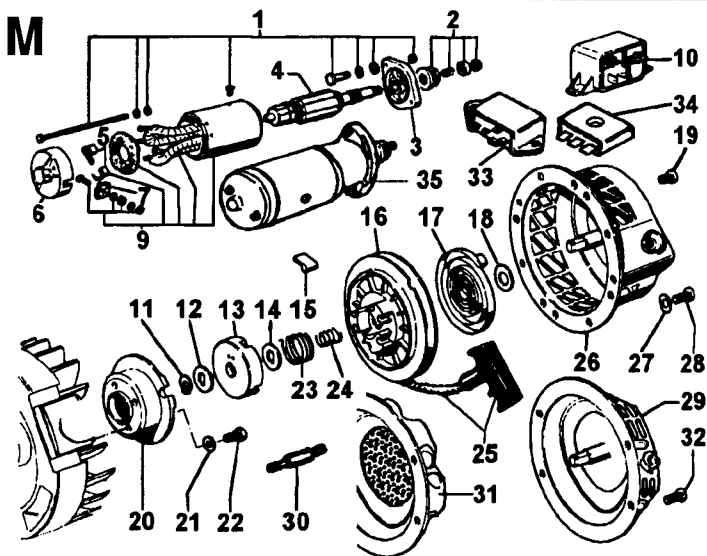
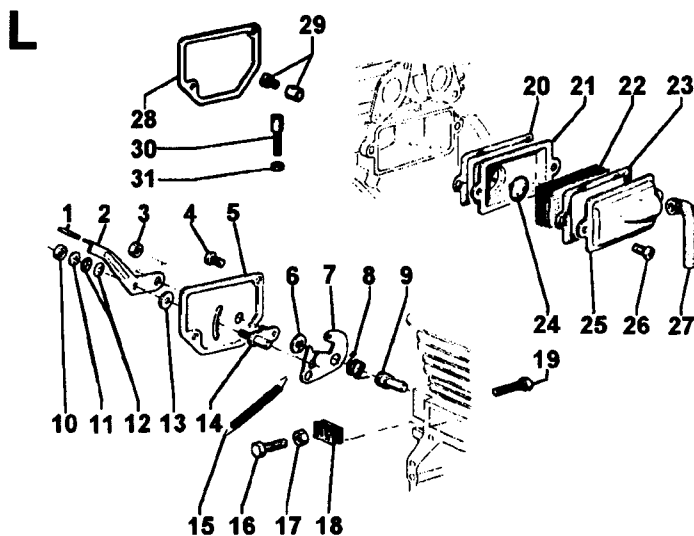
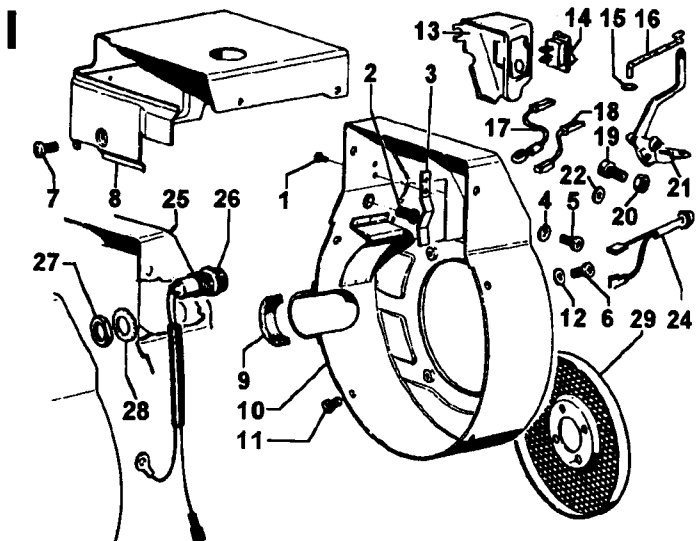


MATRICOLA DEL RICAMBIO
 REFERENCE DE LA PIECE
 SPARE PART NUMBER
 BESTELNUMMER DES TEILES
 REFERENCIA DEL REPUESTO
 REFERÊNCIA DO RECÂMBIO



1	147 9740-000		
2	149 9840-074	2	50 x 3 x 14
3	000 0720-000		
4	000 0700-000		
5	000 7430-007		
6	000 7000-000	4	50 x 1,50
7	000 7300-000		
8	140 0000-114		
9	147 9800-000		
10	147 9800-000		
11	147 9800-000		
12	147 9800-000		

Pagine: 1
 Anno: 1977
 Ed. 17 A



vedi TAVOLA RIC./see SPARE P.TABLE/voir TABLEAU P.DETACH. 1.5302.485

Giugno/June/Juin 1996

MOTORI/ENGINES/MOTEURS Gr. 1IM
 1IM 250-251-252 1IM 300-301-302 1IM 350-351-352 1IM 359-359 "CEE"
 standard & restyling

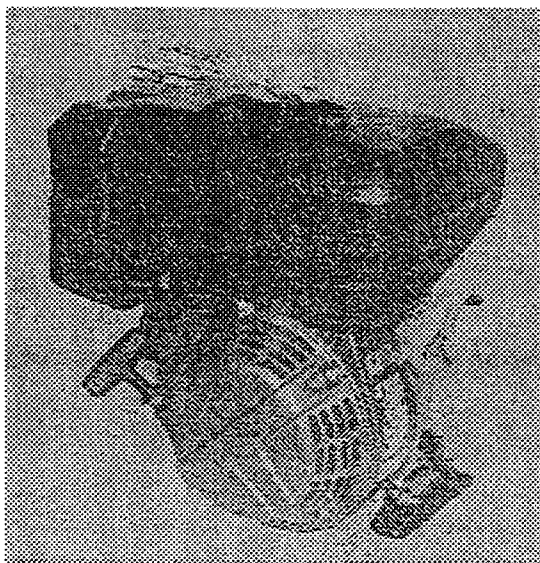
Vedi/See/Voir


Libretto Uso e Man./Use-Maint.booklet/Livret Emploi-Entret. 1.5302.481
 Libretto Service/Service directory/Reseau S.A.V. 1.7968.002

- A - valido dal motore vedi Circolare Tecnica
 from engine S.No see Service Letter
 à partir du moteur voir Circulaire Technique
- B - valido fino al motore vedi Circolare Tecnica
 up to engine s.No. see Service Letter
 jusqu'au moteur voir Circulaire Technique
- I - intercambiabile vedi Circolare Tecnica
 interchangeable see Service Letter
 interchangeable voir Circulaire Technique
- E - ad esaurimento/exhausting part/piece en epuisement.
 npd non più disponibile/no longer available/non plus disponible
 ctvar vedi circolare variazione matricole di particolari intercambiabili
 see variation of interchangeable parts numbers
 voir variation matricules des pièces interchangeables

Descrizioni non impegnative/Subject to modifications/Modifications réservées
 TECO/ATL/Assistenza Tecnica Lombardini/Giugno 1996

Riquadro Drawing Dessin	A	ASPIRAZIONE E SCARICO INTAKE AND EXHAUST ADMISSION ET ECHAPPEMENT	Riquadro Drawing Dessin	G	CIRCUITO COMBUSTIBILE FUEL SYSTEM CIRCUIT CARBURANT
Riquadro Drawing Dessin	B	BIELLA E PISTONE CONNECT.ROD/PISTON SET BIELLE ET PISTON	Riquadro Drawing Dessin	H	CARBURATORE CARBURATOR CARBURATEUR
Riquadro Drawing Dessin	C	ALBERO A GOMITO E VOLANO CRANKSHAFT AND FLYWHEEL VILEBREQUIN ET VOLANT	Riquadro Drawing Dessin	I	LAMIERATI COOLING PANELS TOLES DE REFROIDISSEMENT
Riquadro Drawing Dessin	D	BASAMENTO/PORTINA/PIEDI CRANKCASE/COVER/MOUNTS CARTER/COTE DIST./PIEDS	Riquadro Drawing Dessin	L	COMANDI CONTROLS COMMANDES
Riquadro Drawing Dessin	E	DISTRIBUZIONE/REG.GIRI TIMING/SPEED GOVERNOR DISTRIBUTION/REG.VITESSE	Riquadro Drawing Dessin	M	AVVIAMENTO STARTING DEMARREUR
Riquadro Drawing Dessin	F	TESTA E ACCENSIONE CYL. HEAD AND IGNITION CULASSE ET ALLUMAGE	Riquadro Drawing Dessin	N	INSONORIZZAZIONE SOUNDPROFING INSONORISATION



 intermotor Motori serie 1 IM 1 IM series engines				vedi Tav. Ric. see Parts Table 1.5302.485		RESTYLING										vedi circolare tecnica see service letter	intercambiabilità interchangeability
Pos.	Matricola/Part No.	Note/Remarks		1IM 350-251	1IM 252	1IM 300-301	1IM 302	1IM 350-351	1IM 352	1IM 359	1IM 359 "CEE"	1IM 250	1IM 300	1IM 350	1IM 359		
A 1	7626.064 9	d.8,25x15		2	2	2	2	2	2	2	2	2	2	2	2		
A 2	7625.010 9	d.8x15		1	1	1	1	1	1	1	1	1	1	1	1		
A 3	7565.007 9	d.8,2x14		1	1	1	1	1	1	1	1	1	1	1	1		
A 4	1770.004 9	M 8x20		1	1	1	1	1	1	1	1	1	1	1	1		
A 5	8506.086 1580			1	-	-	-	-	1	1	-	-	-	-	-		
A 6	3240.004 9	M 5x0,8		2	-	-	-	-	2	2	-	-	-	-	-		
A 7	ex 5460.322 -> npd			x	x	x	x	x	x	x	x	x	x	x	x	751	si
	ex 5460.331 -> npd			x	x	x	x	x	x	x	x	x	x	x	x	751	si
	ex 5460.341 ->	E		x	x	x	x	x	x	x	x	x	x	x	x		
	ex 5460.374 -> npd			x	x	x	x	x	x	x	x	x	x	x	x	ctvar	si
	-> 5460.460 158	I insonor./denoised		1	1	1	1	1	1	1	1	1	1	1	1		
A 8	ex 6927.196 -> npd			x	x	x	x	x	x	x	x	x	x	x	x	ctvar	si
	-> 6927.367 1470	I		1	1	1	1	1	1	1	1	1	1	1	1		
A 9	7625.007 9	d.6x12		4	4	4	4	4	4	4	4	4	4	4	4		
A 10	9790.037 9	M 6x8		4	4	4	4	4	4	4	4	4	4	4	4		
A 11	9790.028 9	M 5x10		2	-	-	-	-	2	2	-	-	-	-	-		
A 12	3790.062 1470			1	-	-	-	-	1	1	-	-	-	-	-		
A 13	ex 3930.091 -> npd	vedi/see Pos.A 16		x	x	x	x	x	x	x	x	x	x	x	x		
A 14	5496.165 1580			1	-	-	-	-	1	1	-	-	-	-	-		
A 15	9410.078 1580			1	-	-	-	-	1	1	-	-	-	-	-		
A 16	=3700.323 1690	insonor./denoised		1	-	-	-	-	1	1	-	-	-	-	-		
	Pos.12-13-14-15-16-19-20.																
A 17	7625.008 9	d.6,4x12		2	-	-	-	-	2	2	-	-	-	-	-		
A 18	9730.012 9	M 6x20		2	-	-	-	-	2	2	-	-	-	-	-		
A 19	4775.495 169			1	-	-	-	-	1	1	-	-	-	-	-		
A 20	vedi/see Pos.A 16		x	x	x	x	x	x	x	x	x	x	x	x		
A 21	7625.005 9	d.5x10		2	-	-	-	-	2	2	-	-	-	-	-		
A 22	ex 5462.070 -> npd			x	x	x	x	x	x	x	x	x	x	x	x	22003	si
	-> 5460.400 147	I standard		1	1	1	1	1	1	1	1	1	1	1	1		
A 22a	ex 5460.355 -> npd			x	x	x	x	x	x	x	x	x	x	x	x	22003	no
	ex 5460.101 -> npd			x	x	x	x	x	x	x	x	x	x	x	x	22003	no
	-> 5460.410 1470	A		1	1	1	1	1	1	1	1	1	1	1	1		
A 23	7565.004 9	d.6,1x11		2	2	2	2	2	2	2	2	2	2	2	2		
A 24	3240.009 9	M 6		2	2	2	2	2	2	2	2	2	2	2	2		
A 25	ex 6927.058 ->	E		x	x	x	x	x	x	x	x	x	x	x	x	22003	no
	-> 6927.294 147	A standard		1	1	1	1	1	1	1	1	1	1	1	1		
"	ex 6927.057 ->	E		x	x	x	x	x	x	x	x	x	x	x	x	22003	no
	6927.296 147	A MTC/motorcultivat		1	1	1	1	1	1	1	1	1	1	1	1		
A 26	ex 6927.243 ->	E		x	x	x	x	x	x	x	x	x	x	x	x	22003	no
	-> 6927.291 1470	A standard		1	1	1	1	1	1	1	1	1	1	1	1		
"	ex 6927.244 ->	E		x	x	x	x	x	x	x	x	x	x	x	x	22003	no
	-> 6927.292 1470	MTC/motorcultivat		1	1	1	1	1	1	1	1	1	1	1	1		
A 27	ex 5462.077 -> npd			x	x	x	x	x	x	x	x	x	x	x	x	22003	si
	ex 5460.394 -> npd			x	x	x	x	x	x	x	x	x	x	x	x	ctvar	si
	-> 5460.486 1470	I MTC/motorcultivat		1	1	1	1	1	1	1	1	1	1	1	1		
A 27a	ex 5460.100 -> npd			x	x	x	x	x	x	x	x	x	x	x	x	22003	no
	ex 5460.356 ->	E		x	x	x	x	x	x	x	x	x	x	x	x	22003	no
	-> 5460.408 1470	A MTC/motorcultivat		1	1	1	1	1	1	1	-	1	1	1	1		
A 28	vedi/see Pos.A 83		x	x	x	x	x	x	x	-	-	-	-	-		
A 29	5496.062 147			1	1	1	1	1	1	1	1	-	-	-	-		
A 30	9760.011 9	M 3,5x13		2	2	2	2	2	2	2	2	-	-	-	-		
A 31	vedi/see Pos.A 83		x	x	x	x	x	x	x	-	-	-	-	-		
A 32	1760.003 9	M 6x12		2	2	2	2	2	2	2	2	-	-	-	-		
A 33	7565.004 9	d.6,1x11		2	2	2	2	2	2	2	2	-	-	-	-		
A 34	3200.015 9			-	-	-	-	-	1	1	-	-	-	-	-		
A 35	3240.004 9	M 5x0,8		-	-	-	-	-	2	2	-	-	-	-	-		
A 36	9245.055 150			-	-	-	-	-	1	1	-	-	-	-	-		
A 37	8490.076 155			-	-	-	-	-	1	1	-	-	-	-	-		
A 38	1200.070 9	OR 154		-	-	-	-	-	1	1	-	-	-	-	-		
A 39	9731.085 9	M 6x25		-	-	-	-	-	2	2	-	-	-	-	-		
A 40	7565.004 9	d.6,1x11		-	-	-	-	-	2	2	-	-	-	-	-		

intermotor
Motori serie 1 IM
1 IM series engines

vedi Tav. Ric.
 see Parts Table
 1.5302.485

			1IM 250-251	1IM 252	1IM 300-301	1IM 302	1IM 350-351	1IM 352	1IM 353	1IM 359 "CEE"	RESTYLING	1IM 250	1IM 300	1IM 350	1IM 359	vedi circolare tecnica see service letter	intercambiabilità interchangeability
Pos.	Matricola/Part No.	Note/Remarks															
A 41	4490.072 1580		-	-	-	-	1	1	1	-	-	-	-	-	-		
A 42	7625.005 9	d.5x10	-	-	-	-	1	1	1	-	-	-	-	-	-		
A 43	6927.081 1470		-	-	-	-	1	1	1	-	-	-	-	-	-		
A 44	9375.098 147		-	-	-	-	1	1	1	-	-	-	-	-	-		
A 45	7565.004 9	d.6,1x11	-	-	-	-	2	2	2	-	-	-	-	-	-		
A 46	1760.003 9	M 6x12	-	-	-	-	1	1	1	-	-	-	-	-	-		
A 47	vedi/see Pos.A 55	-	-	-	-	x	x	x	-	-	-	-	-	-		
A 48	1760.061 9	M 6x65	-	-	-	-	1	1	1	-	-	-	-	-	-		
A 49	9400.031 150		-	-	-	-	1	1	1	-	-	-	-	-	-		
A 50	vedi/see Pos.A 55	-	-	-	-	x	x	x	-	-	-	-	-	-		
A 51	vedi/see Pos.A 55	-	-	-	-	x	x	x	-	-	-	-	-	-		
A 52	2175.024 150		-	-	-	-	1	1	1	-	-	-	-	-	-		
A 53	vedi/see Pos.A 55	-	-	-	-	x	x	x	-	-	-	-	-	-		
A 54	1200.085 9	OR 3131	-	-	-	-	1	1	1	-	-	-	-	-	-		
A 55	=3703.004 155 Pos.34-35-36-37-38-41-42-45-46-47-48-49-50-51-52-53-54-55.		-	-	-	-	1	1	1	-	-	-	-	-	-		
A 55	=3700.207 1470 Pos.34-35-36-38-42-43-47-50-51-52-53-54-55.		-	-	-	-	1	1	1	-	-	-	-	-	-		
A 56	vedi/see Pos.A 62	-	-	-	-	-	-	-	-	x	x	x	x	-		
A 57			-	-	-	-	-	-	-	-	1	1	1	1	-		
A 58	4501.124 158		-	-	-	-	-	-	-	-	1	1	1	1	-		
A 59	3790.081 158		-	-	-	-	-	-	-	-	1	1	1	1	-		
A 60	3203.050 9	M 6x1	-	-	-	-	-	-	-	-	2	2	2	2	-		
A 61	2175.150 183 172		-	-	-	-	-	-	-	-	1	1	1	1	-		
A 62	=3700.377 158 " =3700.378 158 Pos.56-61-62-66.	standard ribassato/downward	-	-	-	-	-	-	-	-	1	1	1	1	-		
A 63	=3700.372 147 Pos.63-64-65-67-71-72-73-74-75-76-77-79.	a bagno d'olio oil bath airclean.	-	-	-	-	-	-	-	-	1	1	1	1	-		
A 64	3200.015 9		-	-	-	-	-	-	-	-	1	1	1	1	-		
A 65	3240.004 9	M 5x0,8	-	-	-	-	-	-	-	-	2	2	2	2	-		
A 66	4115.069 158		-	-	-	-	-	-	-	-	2	2	2	2	-		
A 67	9245.055 150		-	-	-	-	-	-	-	-	1	1	1	1	-		
A 68	4501.124 158		-	-	-	-	-	-	-	-	1	1	1	1	-		
A 69	7565.007 9	d.8,2x14	-	-	-	-	-	-	-	-	2	2	2	2	-		
A 70	3240.008 9	M 6x1	-	-	-	-	-	-	-	-	2	2	2	2	-		
A 71	vedi/see Pos.A 63	-	-	-	-	-	-	-	-	x	x	x	x	-		
A 72	5496.229 147		-	-	-	-	-	-	-	-	1	1	1	1	-		
A 73	2175.024 150		-	-	-	-	-	-	-	-	2	2	2	2	-		
A 74	1200.085 9	OR 3131	-	-	-	-	-	-	-	-	1	1	1	1	-		
A 75	vedi/see Pos.A 63	-	-	-	-	-	-	-	-	x	x	x	x	-		
A 76	1200.071 9	OR 156	-	-	-	-	-	-	-	-	1	1	1	1	-		
A 77	vedi/see Pos.A 63	-	-	-	-	-	-	-	-	x	x	x	x	-		
A 78	9580.077 158		-	-	-	-	-	-	-	-	1	1	1	1	-		
A 79	7625.005 9	d.5x10	-	-	-	-	-	-	-	-	1	1	1	1	-		
A 80	3360.039 1470	A	1	1	1	1	1	1	1	1	1	1	1	1	1	22003	
A 81	3630.156 9	A	1	1	1	1	1	1	1	1	1	1	1	1	1	22003	
A 82	4490.072 1580		1	1	1	1	1	1	1	1	-	-	-	-	-		
A 83	=3700.277 1580 Pos.28-29-30-31-83.	insonor./denoised	1	1	1	1	1	1	1	1	-	-	-	-	-		



intermotor
Motori serie 1 IM
1 IM series engines

vedi Tav. Ric.
 see Parts Table
 1.5302.485

Pos.	Matricola/Part No.	Note/Remarks	1IM 250-251	1IM 252	1IM 300-301	1IM 302	1IM 350-351	1IM 352	1IM 359	1IM 359 "CEE"	1IM 250	1IM 300	1IM 350	1IM 359	vedl circolare tecnica see service-letter	intercambiabilità interchangeability
			RESTYLING													
A 84	8180.186	147	1	1	-	-	-	-	-	-	1	-	-	-	ctvar	si
"	8180.187	155	-	-	1	-	-	-	-	-	1	-	-			
"	8180.188	158	-	-	-	1	1	-	-	-	-	1	-			
"	ex 8180.172	-> npd	-	-	-	-	-	x	x	-	-	-	x			
"	-> 8180.193	158 I	-	-	-	-	-	1	1	-	-	1	1			
A 85	6927.403	1580 A	-	-	-	-	-	-	-	-	1	1	1			
A 86	6370.140	147 A	-	-	-	-	-	-	-	-	2	2	2			
A 87	2183.098	147 A	-	-	-	-	-	-	-	-	2	2	2			
B 1	1261.070	147	2	2	2	2	2	2	2	2	2	2	2	22001	no	
B 2	8480.002	147	1	1	1	1	1	1	1	1	1	1	1			
B 3	=1526.026	147 std	1	1	1	1	1	1	1	1	1	1	1			
"	=1526.027	147 -0,25	1	1	1	1	1	1	1	1	1	1	1			
"	=1526.028	147 -0,50	1	1	1	1	1	1	1	1	1	1	1			
	Pos. 3- 4- 5.															
B 4	6330.055	90	1	1	1	1	1	1	1	1	1	1	1			
B 5	1760.030	9 M 6x45	2	2	2	2	2	2	2	2	2	2	2			
B 6	=6502.080	147 std	1	1	-	-	-	-	-	-	1	-	-			
"	=6502.082	147 +0,50	1	1	-	-	-	-	-	-	1	-	-			
"	=6502.083	147 +1,00	1	1	-	-	-	-	-	-	1	-	-			
"	=6502.015	150 std	-	-	1	1	-	-	-	-	1	-	-			
"	=6502.016	150 +0,50	-	-	1	1	-	-	-	-	1	-	-			
"	=6502.017	150 +1,00	-	-	1	1	-	-	-	-	1	-	-			
"	=6502.081	158 std	-	-	-	-	1	1	1	1	-	-	1			
"	=6502.084	158 +0,50	-	-	-	-	1	1	1	1	-	-	1			
"	=6502.085	158 +1,00	-	-	-	-	1	1	1	1	-	-	1			
	Pos. 1- 2- 6- 7.															
B 7	8210.096	147 std	1	1	-	-	-	-	-	-	1	-	-	22001	no	
"	8210.097	147 +0,50	1	1	-	-	-	-	-	-	1	-	-			
"	8210.098	147 +1,00	1	1	-	-	-	-	-	-	1	-	-			
"	8210.077	150 std	-	-	1	1	-	-	-	-	1	-	-			
"	8210.078	150 +0,50	-	-	1	1	-	-	-	-	1	-	-			
"	8210.079	150 +1,00	-	-	1	1	-	-	-	-	1	-	-			
"	ex 8210.099	-> B	-	-	-	-	x	x	x	x	-	-	-			
"	-> 8211.197	169 A std	-	-	-	-	1	1	1	1	-	-	1			
"	ex 8211.001	-> B	-	-	-	-	x	x	x	x	-	-	-			
"	-> 8211.198	169 A +0,50	-	-	-	-	1	1	1	1	-	-	1			
"	ex 8211.002	-> B	-	-	-	-	x	x	x	x	-	-	-			
"	-> 8211.199	169 A +1,00	-	-	-	-	1	1	1	1	-	-	1			
B 8	5168.055	1580	1	1	1	1	1	1	1	1	1	1	1	22007		
C 1	7481.024	9	3	3	3	3	3	3	3	3	3	3	3	762	no	
C 2	2194.014	147	1	1	1	1	1	1	1	1	1	1	1			
C 3	ex 1052.029	-> B	x	x	x	x	x	x	x	x	-	-	-	762	no	
"	->=1050.729	147 A standard	1	1	1	1	1	1	1	1	1	1	1			
"	ex 1052.090	-> B	-	-	x	-	x	-	x	-	-	-	-			
"	->=1050.739	1470 A Ext 4	-	-	1	-	1	-	1	1	-	1	1			
"	ex 1052.088	-> B	x	x	x	x	x	x	x	x	-	-	-	762	no	
"	=1050.735	1470 A Ext 8A	1	1	1	1	1	1	1	1	1	1	1			
	Pos. 1- 2- 3- 4-12-13.															
C 4	9000.027	90	1	1	1	1	1	1	1	1	1	1	1	762	no	
C 5	3001.070	9 6206 C3	1	1	1	1	1	1	1	1	1	1	1			

intermotor
Motori serie 1 IM
1 IM series engines

vedi Tav. Ric.
 see Parts Table
 1.5302.485

RESTYLING

Pos.	Matricola/Part No.	Note/Remarks	1IM 250-251	1IM 252	1IM 300-301	1IM 302	1IM 350-351	1IM 352	1IM 359	1IM 359 "CEE"	1IM 250	1IM 300	1IM 350	1IM 359	vedi circolare tecnica see service letter	Intercambiabilità Interchangeability
C 6	2816.034 1470		1	1	1	1	1	1	1	1	1	1	1	1		
C 7	ex 9880.219 ->	E	x	x	x	x	x	x							757	si
	-> 9880.537 147	I standard	1	1	1	1	1	1	1	1	1	1	1	1		
"	ex 9880.218 -> npd		x	x	x	x	x	x							757	no
	-> 9880.538 1470	A per altern.luce for lighting alt.	1	1	1	1	1	1	1	1	1	1	1	1		
"	ex 9884.095 -> npd		x	x	x	x	x	x							757	no
	->=9880.540 1470	A per avviam.elettr.	1	1	1	1	1	1	1	1	1	1	1	1		
	Pos. 6- 7-16.															
C 8	7530.018 90		1	1	1	1	1	1	1	1	1	1	1	1		
C 9	3260.055 9		1	1	1	1	1	1	1	1	1	1	1	1		
C 10	1770.039 9	M 8x28	1	1	1	1	1	1	1	1	1	1	1	1		
C 11	7625.060 9		1	1	1	1	1	1	1	1	1	1	1	1		
C 12	4936.182 147	B solo per alberi con cava lato p.m. for crankshafts with p.t.o. side keyhole only standard	1	1	1	1	1	1	1	1	-	-	-	-	22006	no
C 13	2280.142 9		1	1	1	1	1	1	1	1	1	1	1	1		
C 14	2280.050 9	6,32 x 6,32 x 60	1	1	1	1	1	1	1	1	1	1	1	1		
"	2280.052 9	6,35x9,52x22,225	1	1	1	1	-	-	-	-	-	-	-	-		
"	2280.066 9	4,76 x 4,76 x 50,8	1	-	-	-	-	-	-	-	-	-	-	-		
C 15	ex 1052.083 ->	B	x												762	no
	->=1050.732 1470	A Ext 3	1	-	-	-	-	-	-	-	-	-	-	-		
"	ex 1052.082 ->	B	x	x	x	x	x	x							762	no
	->=1050.733 1470	A Ext 4	1	1	1	1	1	1	1	1	1	1	1	1		
"	ex 1052.086 ->	B	x	x	x	x									762	no
	->=1050.731 1470	A Ext A3	1	1	1	1	-	-	-	-	-	-	-	-		
	Pos. 2- 3- 4-12-13-15.															
C 16	7750.075 180	A	1	1	1	1	1	1	1	1	1	1	1	1	761	no
C 17	ex 1156.098 ->	B	x	x	x	x	x	x							757	no
	ex 8565.063 -> npd		x	x	x	x	x	x							764	si
	-> 8565.072 183	I	1	1	1	1	1	1	1	1	1	1	1	1		
D 1	1400.057 9000		1	1	1	1	1	1	1	1	1	1	1	1		
D 2	9485.217 1470		1	1	1	1	1	1	1	1	1	1	1	1		

intermotor
Motori serie 1 IM
1 IM series engines

vedi Tav. Ric.
 see Parts Table
 1.5302.485

Pos.	Matricola/Part No.	Note/Remarks	RESTYLING								vedi circolare tecnica see service letter	intercambiabilità interchangeability			
			1IM 250-261	1IM 252	1IM 300-301	1IM 302	1IM 350-351	1IM 352	1IM 359	1IM 359 "CEE"			1IM 250	1IM 300	1IM 350
D 3	ex 1514.001 ->	npd	x	x										758	si
	ex 1510.436 ->	E	x	x										22005	no
	->=1510.716 147	A (1)	1	1	-	-	-	-	-	1	-	-	-		
"	ex 1514.023 ->	E	x	x										758	no
	ex 1510.439 ->	E	x	x										22005	no
	->=1510.722 1470	A (2)	1	1	-	-	-	-	-	1	-	-	-		
"	ex 1510.201 ->	E	x	x										758	no
	ex 1510.442 ->	E	x	x										22005	no
	->=1510.726 1470	A (3)	1	1	-	-	-	-	-	1	-	-	-		
"	ex 1510.204 ->	E	x	x										758	no
	ex 1510.445 ->	E	x	x										22005	no
	->=1510.730 1470	A (4)	1	1	-	-	-	-	-	1	-	-	-		
"	ex 1514.002 ->	npd			x	x								758	si
	ex 1510.437 ->	E			x	x								22005	no
	->=1510.718 155	A (1)	-	-	1	1	-	-	-	-	1	-	-		
"	ex 1514.053 ->	npd			x	x								758	no
	ex 1510.440 ->	E			x	x								22005	no
	->=1510.723 1550	A (2)	-	-	1	1	-	-	-	-	1	-	-		
"	ex 1510.202 ->	npd			x	x								758	no
	ex 1510.443 ->	E			x	x								22005	no
	->=1510.727 1550	A (3)	-	-	1	1	-	-	-	-	1	-	-		
"	ex 1510.205 ->	npd			x	x								758	no
	ex 1510.446 ->	E			x	x								22005	no
	->=1510.731 1550	A (4)	-	-	1	1	-	-	-	-	1	-	-		
"	ex 1513.099 ->	npd					x	x			x			758	si
	ex 1510.438 ->	E					x	x			x			22005	no
	->=1510.720 158	A (1)	-	-	-	-	1	1	-	-	-	1	-		
"	ex 1514.054 ->	npd					x	x			x			758	no
	ex 1510.441 ->	E					x	x			x			22005	no
	->=1510.724 1580	A (2)	-	-	-	-	1	1	-	-	-	1	-		
"	ex 1510.203 ->	E					x	x			x			758	no
	ex 1510.444 ->	E					x	x			x			22005	no
	->=1510.728 1580	A (3)	-	-	-	-	1	1	-	-	-	1	-		
"	ex 1510.206 ->	E					x	x			x			758	no
	ex 1510.447 ->	E					x	x			x			22005	no
	->=1510.732 1580	A (4)	-	-	-	-	1	1	-	-	-	1	-		
"	ex 1510.490 ->	E							x	x		x		22005	no
	->=1510.721 1690	A (1)	-	-	-	-	-	-	1	1	-	-	1		
"	ex 1510.505 ->	E							x	x		x		22005	no
	->=1510.725 1580	A (2)	-	-	-	-	-	-	1	1	-	-	1		
"	ex 1510.504 ->	E							x	x		x		22005	no
	->=1510.729 1580	A (3)	-	-	-	-	-	-	1	1	-	-	1		
"	ex 1510.506 ->	E							x	x		x		22005	no
	->=1510.733 1580	A (4)	-	-	-	-	-	-	1	1	-	-	1		
Pos. 3- 4- 5- 6-30-L 9.															
		(1) standard													
		(2) per avv.el. for el.start.													
		(3) per spia olio/for oil alert													
		(4) per avv.el. e spia olio/for el.start. and oil alert													
D 4	ex 8000.169 ->	B	x	x	x	x	x	x	x	x				22005	no
	-> 8000.121 112	A	1	1	1	1	1	1	1	1	1	1	1		
D 5	ex 8000.168 ->	B	x	x	x	x	x	x	x	x				22005	no
	-> 8000.122 112	A	1	1	1	1	1	1	1	1	1	1	1		
D 6	4845.028 90		1	1	1	1	1	1	1	1	1	1	1		

intermotor
Motore serie 1 IM
1 IM series engines

vedi Tav. Ric.
 see Parts Table
 1.5302.485

RESTYLING

vedi circolare
 tecnica
 see
 service
 letter

Interchangeability
 Interchangeability

Pos.	Matricola/Part No.	Note/Remarks	1IM 250-251	1IM 252	1IM 300-301	1IM 302	1IM 350-351	1IM 352	1IM 359	1IM 359 "CEE"	1IM 250	1IM 300	1IM 350	1IM 359		
D 7	6760.013	9 B	1	1	1	1	1	1	1	1	1	1	1	1	741	
"	6760.051	9 A	1	1	1	1	1	1	1	1	1	1	1	1	741	
"	6760.006	9 B	1	1	1	1	1	1	1	1	1	1	1	1	741	
"	6760.047	9 A	1	1	1	1	1	1	1	1	1	1	1	1	741	
D 8	6760.015	9 B	1	1	1	1	1	1	1	1	1	1	1	1	741	
"	6760.051	9 A	1	1	1	1	1	1	1	1	1	1	1	1	741	
"	6760.047	9 A	1	1	1	1	1	1	1	1	1	1	1	1	741	
D 9	1901.014	9 1/4 GAS	1	1	1	1	1	1	1	1	1	1	1	1		
D 10	9032.056	147	1	1	1	1	1	1	1	1	1	1	1	1		
D 11	9765.058	9 M 16x2	1	1	1	1	1	1	1	1	1	1	1	1		
D 12	1213.056	9 28x38x7	1	1	1	1	1	1	1	1	1	1	1	1		
D 13	ex 6647.006	-> B	x	x	x	x	x	x	x	x	x	x	x	x	762	no
	-> 6645.263	147 A	1	1	1	1	1	1	1	1	1	1	1	1		
D 14	ex 3030.028	-> B	x	x	x	x	x	x	x	x	x	x	x	x	762	no
	-> 3001.070	9 A	1	1	1	1	1	1	1	1	1	1	1	1		
D 15	4350.006	9	2	2	2	2	2	2	2	2	2	2	2	2		
D 16	1200.003	9 OR 118	1	1	1	1	1	1	1	1	1	1	1	1		
D 17	1213.002	9 28 x 38 x 7	1	1	1	1	1	1	1	1	1	1	1	1		
D 18	9732.060	9 M 6x35	9	9	9	9	9	9	9	9	9	9	9	9		
D 19	4601.029	147	1	1	1	1	1	1	1	1	1	1	1	1		
D 20	8460.083	90	2	2	2	2	2	2	2	2	2	2	2	2		
D 21	ex 3440.004	-> E	x	x	x	x	x	x	x	x	x	x	x	x	763	si
	-> 3440.024	1470 I	1	1	1	1	1	1	1	1	1	1	1	1		
"	3440.035	147	-	-	-	-	-	-	-	-	-	-	-	-		
D 22	1200.082	9 OR 3106	1	1	1	1	1	1	1	1	1	1	1	1		
D 23	7555.003	9 d.5	2	2	2	2	2	2	2	2	2	2	2	2		
D 24	9730.115	9 M 5x14	2	2	2	2	2	2	2	2	2	2	2	2		
D 25	6370.259	1470	1	1	1	1	1	1	1	1	1	1	1	1		
D 26	8980.010	90	1	1	1	1	1	1	1	1	1	1	1	1		
D 27	4350.006	9	1	1	1	1	1	1	1	1	1	1	1	1		
D 28	1770.002	9 M 8x16	8	8	8	8	8	8	8	8	8	8	8	8		
D 29	7565.007	9 d.8,2x14	8	8	8	8	8	8	8	8	8	8	8	8		
D 30	ex 4845.028	-> B	x	x	x	x	x	x	x	x	x	x	x	x	22005	no
	-> 4845.203	158 A	1	1	1	1	1	1	1	1	1	1	1	1		
D 31	4535.015	107 A	1	1	1	1	1	1	1	1	1	1	1	1	22005	
D 35	2457.006	147 B	1	1	1	1	1	1	1	1	1	1	1	1	763	no
D 36	7555.004	9 B	1	1	1	1	1	1	1	1	1	1	1	1	763	
D 37	1760.024	9 B	1	1	1	1	1	1	1	1	1	1	1	1	763	
D 38	6429.173	1470	2	2	2	2	2	2	2	2	2	2	2	2		
D 39	4775.145	147 B	1	1	1	1	1	1	1	1	1	1	1	1	730	
D 40	1301.142	147 B	1	1	1	1	1	1	1	1	1	1	1	1	730	
E 1	3240.004	9 M 5x0,8	1	1	1	1	1	1	1	1	1	1	1	1		
E 2	7555.003	9 d.5	1	1	1	1	1	1	1	1	1	1	1	1		
E 3	7625.005	9 d.5x10	1	1	1	1	1	1	1	1	1	1	1	1		
E 4	5200.880	147	1	1	1	1	1	1	1	1	1	1	1	1		
E 5	1755.014	9 M 5x15	1	1	1	1	1	1	1	1	1	1	1	1		
E 6	5800.072	70	1	1	1	1	1	1	1	1	1	1	1	1		
E 7	2183.031	90	1	1	1	1	1	1	1	1	1	1	1	1		
E 8	ex 9685.126	-> B	x	x	x	x	x	x	x	x	x	x	x	x	22005	no
	-> 9685.128	147 A	1	1	1	1	1	1	1	1	1	1	1	1		
E 9	ex 9652.120	-> B	x	x	x	x	x	x	x	x	x	x	x	x	22005	no
	-> 9652.122	147 A	1	1	1	1	1	1	1	1	1	1	1	1		
E 10	6400.029	90	2	2	2	2	2	2	2	2	2	2	2	2		
E 11	5755.125	147	2	2	2	2	2	2	2	2	2	2	2	2		
E 12	6400.028	90	2	2	2	2	2	2	2	2	2	2	2	2		
E 13	7215.029	90	2	2	2	2	2	2	2	2	2	2	2	2		
E 14	ex 7626.059	-> npd	x	x	x	x	x	x	x	x	x	x	x	x	762	no
	-> 7625.005	9 A	1	1	1	1	1	1	1	1	1	1	1	1		
E 15	ex 1165.006	-> B	x	x	x	x	x	x	x	x	x	x	x	x	762	no
	-> 1919.006	90 A	1	1	1	1	1	1	1	1	1	1	1	1		
E 16	vedi/see Pos.E 30	x	x	x	x	x	x	x	x	x	x	x	x		

intermotor
Motore serie 1 IM
1 IM series engines

vedi Tav. Ric.
 see Parts Table
 1.5302.485


RESTYLING

vedi circolare
 tecnica
 see
 service
 letter

intercambiabilità
 interchangeability

Pos.	Matricola/Part No.	Note/Remarks	1IM 250-251	1IM 252	1IM 300-301	1IM 302	1IM 350-351	1IM 352	1IM 359	1IM 359 "CEE"	1IM 250	1IM 300	1IM 350	1IM 359		
E 17	ex 4910.031 -> npd B		x	x	x	x	x	x	x						762	no
	ex=4910.066 -> npd A	vedi/see Pos.E 30	x	x	x	x	x	x	x	x	x	x	x	x	ctvar	
E 18	vedi/see Pos.E 30	x	x	x	x	x	x	x	x	x	x	x	x		
E 19	1165.010 9		1	1	1	1	1	1	1	1	1	1	1	1		
E 20	9790.047 9		3	3	3	3	3	3	3	3	3	3	3	3		
E 21	ex 6141.063 -> B		x	x	x	x	x	x	x						762	no
	-> 6140.415 147 A		1	1	1	1	1	1	1	1	1	1	1	1		
E 22	5204.006 147		1	1	1	1	1	1	1	1	1	1	1	1		
E 23	7555.004 9	d.6	1	1	1	1	1	1	1	1	1	1	1	1		
E 24	3240.008 9	M 6x1	1	1	1	1	1	1	1	1	1	1	1	1		
E 25	7200.064 147		1	1	1	1	1	1	1	1	1	1	1	1		
E 26	3430.055 90		1	1	1	1	1	1	1	1	1	1	1	1		
E 27	1165.010 9		1	1	1	1	1	1	1	1	1	1	1	1		
E 28	7620.017 9		1	1	1	1	1	1	1	1	1	1	1	1		
E 29	6130.050 9		1	1	1	1	1	1	1	1	1	1	1	1		
E 30	ex 7362.075 -> B		x	x	x	x	x	x	x						762	no
	->=7362.235 147 A		1	1	1	1	1	1	1	1	1	1	1	1		
	Pos.16-17-18-19-25-26-27-28-30.															
E 31	1301.245 147 A		1	1	1	1	1	1	1	1	1	1	1	1	762	
E 32	1111.106 147 A		1	1	1	1	1	1	1	1	1	1	1	1	762	
E 33	8430.061 9 A		1	1	1	1	1	1	1	1	1	1	1	1	762	
E 34	ex 3348.022 -> npd		x	x	x										707	si
	ex 1011.055 -> B	acc.meccanica dentat.dritta mechanic.ignition straight toothing	1	1	1										762	no
"	=3348.041 169 A	acc.elettronica dentat.dritta electronic ignit. straight toothing	1	1	1	1	1								ctvar	si
"	ex 1011.268 -> npd		x	x											22005	si
	ex 1011.290 -> E				x	x	x	x	x						22005	si
	->=3348.040 169 I	acc.elettronica dentat.elicoidale electronic ignit. helical-toothed	1	1	1	1	1	1	1	1	1	1	1	1		
	Pos.31-32-33-34.															
E 35	2183.099 158		-	-	-	-	-	-	-	1	1	1	1	1		
E 36	1185.059 9		-	-	-	-	-	-	-	1	1	1	1	1		
E 37	5801.560 158		-	-	-	-	-	-	-	1	1	1	1	1		
F 1	1450.001 70	standard	1	1	1	1	1	1	1	1	1	1	1	1		
"	1450.092 1470	MTC/motorcultivat ribass./short type	1	1	1	1	1	1	1	-	-	-	-	-		
F 2	6900.037 70	standard	1	1	1	1	1	1	1	-	-	-	-	-		
"	6902.157 147	MTC/motorcultivat	1	-	1	-	1	-	1	-	-	-	-	-	22002	
F 3	2135.049 70		1	1	1	1	1	1	1	1	1	1	1	1		
F 4	1780.055 9	M 10x45	9	9	9	9	9	9	9	9	9	9	9	9		
F 5	7626.028 9	d.10,5x20	9	9	9	9	9	9	9	9	9	9	9	9		
F 6	9201.073 147		1	-	-	-	-	-	-	1	-	-	-	-		
"	9201.075 158		-	1	-	-	-	-	-	-	-	-	-	-		
"	9201.074 155		-	-	1	-	-	-	-	-	1	-	-	-		
"	9201.076 157		-	-	-	1	-	-	-	-	-	-	-	-		
"	9200.362 158		-	-	-	-	1	-	1	-	-	1	1	1		
"	9201.077 159		-	-	-	-	-	1	-	-	-	-	-	-		
F 7	2100.006 999		1	1	1	1	1	1	1	1	1	1	1	1		

intermotor		vedi Tav. Ric. see Parts Table 1.5302.485		RESTYLING										vedi circolare tecnica see service letter	intercambiabilità interchangeability	
Pos.	Matricola/Part No.	Note/Remarks	1IM 250-251	1IM 252	1IM 300-301	1IM 302	1IM 350-351	1IM 352	1IM 359	1IM 359 "CEE"	1IM 250	1IM 300	1IM 350	1IM 359		
F 8	5400.007 90		1	1	1	1	1	1	1	1	1	1	1	1		
F 9	=2187.002 147 Pos. 1- 8- 9.		1	1	1	1	1	1	1	-	-	-	-	-		
F 10	2470.054 147		1	1	1	1	1	1	1	1	1	1	1	1		
F 11	9790.039 9	M 6x12	1	1	1	1	1	1	1	1	-	-	-	-		
F 12	3240.003 9	M 4	2	2	2	2	2	2	2	2	-	-	-	-		
F 13	4730.530 147		1	-	-	-	-	-	-	1	-	-	-	-		
"	4730.537 158		-	1	-	1	1	1	1	1	-	-	1	1		
"	4730.531 155		-	-	1	-	-	-	-	-	1	-	-	-		
F 14	1750.037 9	M 4x25	1	1	1	1	1	1	1	1	-	-	-	-		
F 15	8770.029 147		1	1	1	1	1	1	1	1	-	-	-	-		
F 16	ex 1567.035 -> npd	acc.meccanica mechanic.ignition	x	x	x	x	x	x	x						730	si
"	->=1567.097 147	I acc.elettronica electronic ignit.	1	1	1	1	1	1	1	-	-	-	-	-		
"	=1567.154 1470	* MTC/motorcultivat * ribass.acc.elettr. * short type-elect.1	1	1	1	1	1	1	1	1	-	-	-	-		
"	=1567.128 147	** MTC/motorcultivat ** acc.elettronica - con calza metall. protezione cavo ** electronic ignit. with protected coil wire	1	1	1	1	1	1	1	1	-	-	-	-		
"	Pos. 1- 8- 9-10-16.															
"	ex 1567.064 -> npd	scherm.-acc.mecc. screened-mech.ign.	x	x	x	x	x	x	x						730	si
"	=1567.096 147	I scherm.-acc.elett. screened-el.ignit.	1	1	1	1	1	1	1	-	-	-	-	-		
"	Pos. 8- 9-10-16-20.															
F 17	3526.085 1470		1	1	1	1	1	1	1	1	1	1	1	1		
F 18	7625.007 9	d.6x12	1	1	1	1	1	1	1	1	1	1	1	1		
F 19	1760.006 9	M 6x20	2	2	2	2	2	2	2	2	2	2	2	2		
"	1760.008 9	M 6x25	2	2	2	2	2	2	2	2	2	2	2	2		
F 20	2145.004 1470	scherm./screened standard	1	1	1	1	1	1	1	1	-	-	-	-		
F 21	1567.201 158		-	-	-	-	-	-	-	-	1	1	1	1		
F 22	7200.067 147	B	1	1	1	1	1	1	1						730	
F 23	1301.074 147	B	1	1	1	1	1	1	1						730	
F 24	5040.006 70	B	1	1	1	1	1	1	1						730	
F 25	2522.010 147	B	1	1	1	1	1	1	1						730	
G 1	=8103.004 153	standard	1	-	1	-	1	-	1	-	-	-	-	-		
"	Pos. 1- 3-11.															
"	ex=8103.012 -> npd		x	x	x	x	x	x	x						753	si
"	->=8103.244 1470	I MTC/motorcultivat	1	-	1	-	1	-	1	-	-	-	-	-		
"	Pos. 1- 3-21.															
"	=8103.266 1690	insonor./denoised	1	-	1	-	1	-	1	1	-	-	-	-		
"	Pos. 1- 3-10-11.															
"	ex 8103.205 ->	E	x	x	x	x	x	x	x						22005	no
"	-> 8103.273 1470	A MTC/motorcultivat insonor./denoised	1	-	1	-	1	-	1	-	-	-	-	-		
G 2	5401.023 147		1	1	1	1	1	1	1	1	-	-	-	-		
G 3	ex=9043.038 -> npd		x	x	x	x	x	x	x						753	no
"	->=9080.131 147	A benzina/gasoline	1	1	1	1	1	1	1	1	-	-	-	-		
"	Pos. 3-25.															

 intermotor Motori serie 1 IM 1 IM series engines		vedi Tav. Ric. see Parts Table 1.5302.485		RESTYLING								vedi circolare tecnica see service letter	intercambiabilità interchangeability			
Pos.	Matricola/Part No.	Note/Remarks	1IM 250-251	1IM 252	1IM 300-301	1IM 302	1IM 350-351	1IM 352	1IM 359	1IM 359 "CEE"	1IM 250	1IM 300	1IM 350	1IM 359		
G 4	4775.469 1470		1	1	1	1	1	1	1	1	-	-	-	-		
G 5	7555.003 9	d.5	2	2	2	2	2	2	2	2	-	-	-	-		
G 6	3240.008 9	M 6x1	2	2	2	2	2	2	2	2	-	-	-	-		
G 7	9375.196 7000		1	1	1	1	1	1	1	1	-	-	-	-		
G 8	7500.018 9		2	2	2	2	2	2	2	2	-	-	-	-		
G 9	9790.039 9	M 6x12	2	2	2	2	2	2	2	2	-	-	-	-		
G 10	4580.076 44		-	-	-	-	-	-	1	-	-	-	-	-		
G 11	7755.055 147		1	-	-	-	-	-	1	-	-	-	-	-		
"	7755.102 1580		-	-	-	-	-	-	1	-	-	-	-	-		
G 12	7500.018 9		2	2	2	2	2	2	2	2	-	-	-	-		
G 13	9790.039 9	M 6x12	2	2	2	2	2	2	2	2	-	-	-	-		
G 14	4501.107 158		2	2	2	2	2	2	2	2	-	-	-	-		
G 15	6927.272 1690		1	1	1	1	1	1	1	1	-	-	-	-		
G 16	2942.133 158		1	-	-	-	-	-	1	-	-	-	-	-		
G 17	4470.013 158		1	1	1	1	1	1	1	1	-	-	-	-		
G 18	7565.004 9	d.6,1x11	2	2	2	2	2	2	2	2	-	-	-	-		
G 19	3240.008 9	M 6x1	2	2	2	2	2	2	2	2	-	-	-	-		
G 20	2151.199 1470	0,90	1	-	-	-	-	-	-	-	-	-	-	-		
"	2151.228 147	0,90	1	-	-	-	-	-	-	-	-	-	-	-		
"	2151.237 155	0,90	1	-	-	-	-	-	-	-	-	-	-	-		
"	2151.246 147	0,94	1	1	1	1	1	1	-	-	-	-	-	-		
"	2151.247 155	0,98	-	1	-	1	-	-	-	-	-	-	-	-		
"	2151.248 1690	0,94	-	-	-	-	1	1	1	-	-	-	-	-		
"	2151.249 1690	0,98	-	-	-	-	-	1	1	-	-	-	-	-		
"	2151.250 159	1,01	-	-	-	-	1	-	-	-	-	-	-	-		
"	2151.251 147	0,94	1	1	1	1	1	-	-	-	-	-	-	-		
"	2151.252 157	0,98	-	1	-	1	-	-	-	-	-	-	-	-		
"	2151.253 169	0,98	-	-	-	-	1	1	1	-	-	-	-	-		
"	2151.254 169	0,98	-	-	-	-	-	1	1	-	-	-	-	-		
"	2151.255 159	1,01	-	-	-	-	1	-	-	-	-	-	-	-		
"	2151.256 147	0,94	1	1	1	1	1	-	-	-	-	-	-	-		
"	2151.257 157	0,98	-	1	-	1	-	-	-	-	-	-	-	-		
"	2151.258 169	0,94	-	-	-	-	1	1	1	-	-	-	-	-		
"	2151.259 169	0,98	-	-	-	-	-	1	1	-	-	-	-	-		
"	2151.260 159	1,01	-	-	-	-	1	-	-	-	-	-	-	-		
per identificazione carburatori vedere tabella in ultima pagina see carburetor list to identify (last page)																
G 21	5981.059 1470	A MTC/motorcultivat insonor./denoised	1	-	1	-	1	-	1	-	-	-	-	-	22004	
G 22	4501.108 158		1	2	1	2	1	2	1	1	1	1	1	1		
G 23	9708.002 89		-	1	-	1	-	1	-	-	-	-	-	-		
G 25	vedi/see Pos.G 3	x	x	x	x	x	x	x	x	-	-	-	-		
G 26	=8103.003 147 Pos.26-27-28-29-42-43-44-45.		-	1	-	1	-	1	-	-	-	-	-	-		
G 27	9043.048 147	benzina/gasoline	-	1	-	1	-	1	-	-	-	-	-	-		
G 28	=9043.050 147 Pos.28-29.	petrolio/kerosene	-	1	-	1	-	1	-	-	-	-	-	-		
G 29	1200.015 9	OR 137	-	1	-	1	-	1	-	-	-	-	-	-		
G 30	3630.057 9		3	-	3	-	3	-	3	-	-	-	-	-		
G 31	9375.196 7000	MTC/motorcultivat	1	-	1	-	1	-	1	-	-	-	-	-		
G 32	1760.001 9	M 6x10	1	-	1	-	1	-	1	-	-	-	-	-		
G 33	9375.196 7000	MTC/motorcultivat	1	-	1	-	1	-	1	-	-	-	-	-		
G 34	8546.037 1470	MTC/motorcultivat	1	-	1	-	1	-	1	-	-	-	-	-		
G 35	9375.108 1470	MTC/motorcultivat	1	-	1	-	1	-	1	-	-	-	-	-		
G 36	3617.037 1470		1	-	1	-	1	-	1	-	-	-	-	-		
G 37	9375.193 20	MTC/motorcultivat	1	-	1	-	1	-	1	-	-	-	-	-		



intermotor
Motori serie 1 IM
1 IM series engines

vedi Tav. Ric.
see Parts Table
1.5302.485

RESTYLING

vedi
circolare
tecnica
see
service
letter

Intercambiabilità
Interchangeability

Pos.	Matricola/Part No.	Note/Remarks	1IM 250-251	1IM 252	1IM 300-301	1IM 302	1IM 350-351	1IM 352	1IM 359	1IM 359 "CEE"	RESTYLING			
			1IM 250	1IM 300	1IM 350	1IM 359	1IM 250	1IM 300	1IM 350	1IM 359				
G 38	3617.018	9	1	1	1	1	1	1	1	1				
G 39	3630.057	9	1	1	1	1	1	1	1	1				
G 40	9375.192	18	1	1	1	1	1	1	1	1				
G 41	7755.062	1470	1	1	1	1	1	1	1	1				
G 42	4775.052	45		1	1	1	1	1	1	1				
G 43	7755.060	147		1	1	1	1	1	1	1				
G 44	7565.004	9		1	1	1	1	1	1	1				
G 45	1760.014	9		1	1	1	1	1	1	1				
G 46	4501.107	158							2	2	2	2		
G 47	9730.012	9							2	2	2			
"	9732.078	9											2	
G 48	4501.123	158							1	1	1	1		
G 49	6760.103	9							2	2	2	2		
G 50	7565.004	9							2	2	2	2		
G 51	3240.008	9							2	2	2	2		
G 52	2151.269	155							1	1				
"	2151.268	158											1	
"	2151.267	169											1	
G 53	4501.124	158							1	1	1	1		
G 54	5401.110	183							1	1	1	1		
G 55	9043.079	158							1	1	1	1		
G 56	3240.004	9							1	1	1	1		
G 57	7565.003	9							1	1	1	1		
G 58	8545.575	158							1	1	1	1		
G 59	6585.069	224												
"	6585.087	224							1	1	1	1		
G 60	7625.005	9							1	1	1	1		
G 61	9730.096	9							1	1	1	1		
G 62	8103.297	158							1	1	1	1		
G 63	3240.132	9							1	1	1	1		
G 64	4580.076	183							1	1	1	1		
G 65	3203.050	9							2	2	2	2		
G 66	7625.093	9							2	2	2	2		
G 67	7701.154	9							8	8	8	8		
G 68	3527.427	158							2	2	2	2		
G 69	8865.183	158							1	1	1	1		
G 70	3527.437	158							2	2	2	2		
G 71	7625.093	9							2	2	2	2		
G 72	9732.078	9							2	2	2	2		
G 73	3630.057	9							1	1	1	1		
G 74	7755.108	158							1	1	1	1		
G 75	9375.934	158							1	1	1	1		
G 76	3855.139	158							1	1	1	1		
G 77	9375.936	158							1	1	1	1		
G 78	9375.935	158							1	1	1	1		
G 79								x	x	x	x		
G 80	3730.098	1580							1	1	1	1		
H 1	6100.029	147	1	1	1	1								
"	6100.028	158					1	1	1					
H 3	9820.112	9	1	1	1	1	1	1	1					
H 4	5801.141	147	1	1	1	1	1	1	1					
H 6	7996.014	147	1	1	1	1	1	1	1					
H 8	3588.028	147	1	1	1	1								
"	3588.027	158					1							
"	3588.035	1580						1						
"	3588.034	74							1					
H 9	7996.013	999	1	1	1	1	1	1	1					
H 10	1200.172	9	1	1	1	1	1	1	1					
H 11	4126.016	147	1	1	1	1	1	1						
"	4126.072	1580						1						
"	4126.067	74							1					

intermotor
Motori serie 1 IM
1 IM series engines

vedi Tav. Ric.
 see Parts Table
 1.5302.485

RESTYLING

vedi
 circolare
 tecnica
 see
 service
 letter

intercambiabilità
 interchangeability

Pos.	Matricola/Part No.	Note/Remarks	1IM 250-251	1IM 252	1IM 300-301	1IM 302	1IM 350-351	1IM 352	1IM 359	1IM 359 "CEE"	1IM 250	1IM 300	1IM 350	1IM 359
H 12	1200.173 9		1	1	1	1	1	1	1	1	-	-	-	-
H 13	6610.004 147		1	1	1	1	1	1	1	1	-	-	-	-
H 14	4126.077 147	0,94 max./main jet	1	1	1	1	1	1	1	1	-	-	-	-
"	4126.017 147	0,90 "	1	-	1	-	1	-	-	-	-	-	-	-
"	4126.075 169	0,98 "	-	1	-	1	-	-	-	-	-	-	-	-
"	4126.074 159	1,01 "	-	-	-	-	1	-	-	-	-	-	-	-
"	4126.071 1580	1,05 "	-	-	-	-	-	1	-	-	-	-	-	-
"	4126.069 74	1,05 "	-	-	-	-	-	-	1	-	-	-	-	-
per identificazione getto max vedi tabella carburatori in ultima pagina see carburator list to identify main jet (last page)														
H 15	6610.003 147		1	1	1	1	1	1	1	1	-	-	-	-
H 19	3730.041 10		1	1	1	1	1	-	-	-	-	-	-	-
"	3730.049 180		-	-	-	-	-	1	1	-	-	-	-	-
H 20	6491.021 147		1	1	1	1	1	-	-	-	-	-	-	-
"	6491.029 147		-	-	-	-	-	1	1	-	-	-	-	-
H 22	4105.009 147		1	1	1	1	1	1	1	1	-	-	-	-
H 23	6231.077 999		1	1	1	1	1	1	1	1	-	-	-	-
H 24	9850.073 9		1	1	1	1	1	1	1	1	-	-	-	-
H 25	5801.141 147		1	1	1	1	1	1	1	1	-	-	-	-
H 26	9820.113 9		1	1	1	1	1	1	1	1	-	-	-	-
H 30	5801.142 147		1	1	1	1	1	1	1	1	-	-	-	-
H 31	6100.035 147		1	1	1	1	-	-	-	-	-	-	-	-
"	6100.030 147		-	-	-	-	1	1	1	1	-	-	-	-
H 32	8180.167 74		1	1	1	1	1	1	1	1	-	-	-	-
H 33	4126.080 155	0,75	-	-	-	-	-	-	-	1	1	-	-	-
"	4126.081 158	0,78	-	-	-	-	-	-	-	-	-	1	-	-
"	4126.082 169	0,88	-	-	-	-	-	-	-	-	-	-	1	-
I 1	7481.025 9		2	2	2	2	2	2	2	2	2	2	2	2
I 2	7195.003 70		1	1	1	1	1	1	1	1	-	-	-	-
I 3	5640.010 147		1	1	1	1	1	1	1	1	-	-	-	-
I 4	7500.018 9		2	2	2	2	2	2	2	2	2	2	2	2
I 5	9790.039 9	M 6x12	2	2	2	2	2	2	2	2	2	2	2	2
I 6	9790.039 9	M 6x12	4	4	4	4	4	4	4	4	4	4	4	4
I 7	9790.039 9	M 6x12	1	1	1	1	1	1	1	1	1	1	1	1
I 8	ex 2920.074 -> npd		x	x	x	x	x	x	x	-	-	-	-	-
"	-> 2920.170 147	I standard	1	1	1	1	1	1	1	-	1	1	1	1
"	2920.117 1470	insonor./denoised	-	-	-	-	-	-	-	1	-	-	-	-
"	2920.173 147	insonor./denoised	-	-	-	-	-	-	-	-	1	1	1	1
I 9	4776.059 1470		1	1	1	1	1	1	1	1	1	1	1	1
I 10	=2568.053 147	standard	1	1	1	1	1	1	1	-	-	-	-	-
"	=2568.064 147	avv.el./el.start.	1	1	1	1	1	1	1	-	-	-	-	-
"	=2569.472 1690	insonor./denoised	-	-	1	-	1	-	1	1	-	-	-	-
"	=2569.546 147	insonor.- avv.el. denoised-el.start.	-	-	1	-	1	-	1	1	-	-	-	-
Pos. 2- 3-10.														
"	2569.571 147	standard	-	-	-	-	-	-	-	-	1	1	1	1
"	2569.575 147	insonor./denoised	-	-	-	-	-	-	-	-	1	1	1	1
"	2569.598 147	avv.el. e spia ol el.start-oil aler	-	-	-	-	-	-	-	-	1	1	1	1
"	2569.600 147	insonor.- avv.el. pred.spia olio denoised-el.start. oil alert fitted	-	-	-	-	-	-	-	-	1	1	1	1
I 11	9790.037 9	M 6x8	4	4	4	4	4	4	4	4	4	4	4	4

intermotor
Motori serie 1 IM
1 IM series engines

vedi Tav. Ric.
 see Parts Table
 1.5302.485

RESTYLING

vedi circolare
 tecnica
 see
 service
 letter

intercambiabilità
 interchangeability

Pos.	Matricola/Part No.	Note/Remarks	1IM 250-251	1IM 252	1IM 300-301	1IM 302	1IM 350-351	1IM 352	1IM 359	1IM 359 "CEE"	1IM 250	1IM 300	1IM 350	1IM 359		
I 12	7500.018	9	2	2	2	2	2	2	2	2	2	2	2	2		
I 13	8900.488	158	-	-	-	-	-	-	-	-	1	1	1	1		
I 14	5041.256	158	-	-	-	-	-	-	-	-	1	1	1	1		
I 15	1185.059	9	-	-	-	-	-	-	-	-	1	1	1	1		
I 16	2183.100	158	-	-	-	-	-	-	-	-	1	1	1	1		
I 17	2185.921	158	-	-	-	-	-	-	-	-	1	1	1	1		
I 18	2185.922	158	-	-	-	-	-	-	-	-	1	1	1	1		
I 19	1760.006	9	M 6x20	-	-	-	-	-	-	-	1	1	1	1		
I 20	3203.050	9	M 6x1	-	-	-	-	-	-	-	1	1	1	1		
I 21	8510.150	158	-	-	-	-	-	-	-	-	1	1	1	1		
I 22	5715.060	9	-	-	-	-	-	-	-	-	1	1	1	1		
I 24	8345.056	158	-	-	-	-	-	-	-	-	1	1	1	1		
I 25	2569.189	1470	avv.el./el.start.	1	1	1	1	1	1	-	-	-	-	-		
"	2569.188	1470	avv.el. e spia ol el.start-oil aler	1	1	1	1	1	1	-	-	-	-	-		
I 26	ex 8345.008 -> ->=8345.039 1470 Pos.26-27.	E I	x x x x x x x	1	1	1	1	1	1	-	-	-	-	763	si	
I 27	vedi/see Pos.I 26	x x x x x x x	-	-	-	-	-	-	-	-	-	-			
I 28	7540.010	147	1	1	1	1	1	1	1	-	-	-	-			
I 29	5096.064	147	1	1	1	1	1	1	1	1	1	1	1			
L 1	vedi/see Pos.L 5	x x x x x x x	x x x x x x x	x x x x x x x	x x x x x x x	x x x x x x x	x x x x x x x	x x x x x x x	x x x x x x x	x x x x x x x	x x x x x x x	x x x x x x x			
L 2	ex 5201.049 -> -> 5200.606 147	B A	x x x x x x x	1	1	1	1	1	1	1	1	1	1	756	no	
L 3	3240.004	9	M 5x0,8	1	1	1	1	1	1	1	1	1	1			
L 4	9790.028	9	M 5x10	2	2	2	2	2	2	2	2	2	2			
L 5	ex 2691.053 -> npd ->=2750.282 147 Pos. 1- 2- 3- 5-10-11-12-13-14.	npd I	x x x x x x x	1	1	1	1	1	1	1	1	1	1	756	si	
L 6	1165.006	9	1	1	1	1	1	1	1	1	1	1	1	732		
L 7	5200.202	1470	1	1	1	1	1	1	1	1	1	1	1	732		
L 8	ex 5680.067 -> npd -> 5680.119 147	npd I	x x x x x x x	1	1	1	1	1	1	1	1	1	1	ctvar	si	
L 9	6140.137	1470	1	1	1	1	1	1	1	1	1	1	1	732		
L 10	3203.038	9	M 5	1	1	1	1	1	1	1	1	1	1			
L 11	7626.017	9	d.5,3x9,5	1	1	1	1	1	1	1	1	1	1			
L 12	vedi/see Pos.L 5	x x x x x x x	x x x x x x x	x x x x x x x	x x x x x x x	x x x x x x x	x x x x x x x	x x x x x x x	x x x x x x x	x x x x x x x	x x x x x x x	x x x x x x x			
L 13	vedi/see Pos.L 5	x x x x x x x	x x x x x x x	x x x x x x x	x x x x x x x	x x x x x x x	x x x x x x x	x x x x x x x	x x x x x x x	x x x x x x x	x x x x x x x	x x x x x x x			
L 14	6371.013	90	1	1	1	1	1	1	1	1	1	1	1			
L 15	5655.047	147	std.	1	1	1	1	1	1	1	1	1	1			
"	5655.108	1470	per gruppi elettr. for generat.sets	1	1	1	1	1	1	1	1	1	1			
L 16	1760.034	9	M 6x25 std.	1	1	1	1	1	1	1	1	1	1			
"	1760.086	9	M 6x30 per gruppi elettr. for generat.sets	1	1	1	1	1	1	1	1	1	1			
L 17	3240.008	9	M 6x1	1	1	1	1	1	1	1	1	1	1	732		
L 18	1557.058	147	1	1	1	1	1	-	-	-	-	-	-	732		
L 19	1760.082	9	M 6x35	1	1	1	1	1	1	1	1	1	1	732		
L 20	4680.039	90	1	1	1	1	1	1	1	1	1	1	1			
L 21	=7951.109 147 Pos.21-24.	147	1	1	1	1	1	1	1	1	1	1	1			
L 22	5976.001	90	1	1	1	1	1	1	1	1	1	1	1			
L 23	4680.039	90	1	1	1	1	1	1	1	1	1	1	1			



intermotor
Motori serie 1 IM
1 IM series engines

vedi Tav. Ric.
 see Parts Table
 1.5302.485

RESTYLING

vedi
 circolare
 tecnica
 see
 service-
 letter

Intercambiabilità
 Interchangeability

Pos.	Matricola/Part No.	Note/Remarks	1IM 250-251	1IM 252	1IM 300-301	1IM 302	1IM 350-351	1IM 352	1IM 359	1IM 359 "CEE"	1IM 250	1IM 300	1IM 350	1IM 359		
L 24	9695.013	180	1	1	1	1	1	1	1	1	1	1	1	1		
L 25	2690.046	90	1	1	1	1	1	1	1	-	-	-	-	-		
"	2690.288	1470	1	1	1	1	1	1	1	1	1	1	1	1		
L 26	9790.039	9	1	1	1	1	1	1	1	1	1	1	1	1		
L 27	9580.023	180	1	1	1	1	1	1	1	-	-	-	-	-		
L 28	2691.051	147	1	1	1	1	1	1	1	1	1	1	1	1		
L 29	5830.119	10	1	1	1	1	1	1	1	1	1	1	1	1		
L 30	9180.011	70	1	1	1	1	1	1	1	1	1	1	1	1		
L 31	3240.009	9	1	1	1	1	1	1	1	1	1	1	1	1		
M 1	8140.097	1470	1	1	1	1	1	1	1	1	1	1	1	1		
M 2	6456.009	1470	1	1	1	1	1	1	1	1	1	1	1	1		
M 3	ex 6360.043	-> E	x	x	x	x	x	x							747	no
	ex 8900.154	-> npd	x	x	x	x	x	x							752	si
	-> 8815.062	1470 I	1	1	1	1	1	1	1	1	1	1	1	1		
M 4	4908.033	147	1	1	1	1	1	1	1	1	1	1	1	1		
M 5	8310.043	147	1	1	1	1	1	1	1	1	1	1	1	1		
M 6	8815.063	1470	1	1	1	1	1	1	1	1	1	1	1	1		
M 7	6617.009	147	1	1	1	1	1	1	1	1	1	1	1	1		
M 9	9599.045	147	1	1	1	1	1	1	1	1	1	1	1	1		
M 10	5041.019	9000	1	1	1	1	1	1	1	1	1	1	1	1		
M 11	1165.006	9	1	1	1	1	1	1	1	1	1	1	1	1		
M 12	3410.054	147	1	1	1	1	1	1	1	-	-	-	-	-		
M 13	2136.022	1470	1	1	1	1	1	1	1	-	-	-	-	-		
M 14	3410.054	1470	1	1	1	1	1	1	1	-	-	-	-	-		
M 15	6366.004	90	1	1	1	1	1	1	1	-	-	-	-	-		
"	5025.094	196	-	-	-	-	-	-	-	2	2	2	2	2		
M 16	7100.244	1470	1	1	1	1	1	1	1	-	-	-	-	-		
"	7100.371	196	-	-	-	-	-	-	-	1	1	1	1	1		
M 17	5801.179	1470	1	1	1	1	1	1	1	-	-	-	-	-		
"	5801.539	196	-	-	-	-	-	-	-	1	1	1	1	1		
M 18	3430.101	1470	1	1	1	1	1	1	1	-	-	-	-	-		
M 19	9790.037	9	2	2	2	2	2	2	2	-	-	-	-	-		
M 20	6961.014	147	1	1	1	1	1	1	1	-	-	-	-	-		
"	6961.106	147	-	-	-	-	-	-	-	1	1	1	1	1		
M 21	7555.004	9	4	4	4	4	4	4	4	4	4	4	4	4		
M 22	1760.005	9	4	4	4	4	4	4	4	4	4	4	4	4		
M 23	5680.064	1470	1	1	1	1	1	1	1	-	-	-	-	-		
"	5660.066	196	-	-	-	-	-	-	-	1	1	1	1	1		
M 24	5725.041	1470	1	1	1	1	1	1	1	-	-	-	-	-		
"	5590.026	196	-	-	-	-	-	-	-	1	1	1	1	1		
M 25	4055.005	90	1	1	1	1	1	1	1	-	-	-	-	-		
"	4904.038	196	-	-	-	-	-	-	-	1	1	1	1	1		
M 26	=1471.069	1470	1	1	1	1	1	1	1	-	-	-	-	-		
"	=1471.085	158	1	1	1	1	1	1	1	-	-	-	-	-		
	Pos.11-12-13-14-15-16-17-18-23-24-25-26.	MTC/motorcultivat insonor./denoised														
M 27	7625.008	9	4	4	4	4	4	4	4	-	-	-	-	-		
M 28	9790.039	9	2	2	2	2	2	2	2	-	-	-	-	-		
M 29	=1471.089	196	-	-	-	-	-	-	-	1	1	1	1	1		
	Pos.11-15-16-17-23-24-25-29.															
M 30	2501.129	196	-	-	-	-	-	-	-	4	4	4	4	4		
M 31	6927.358	196	-	-	-	-	-	-	-	1	1	1	1	1		
M 32	9730.309	9	-	-	-	-	-	-	-	4	4	4	4	4		
M 33	ex 6607.015	-> B	x	x	x	x	x	x							757	no
	ex 7362.225	-> npd	x	x	x	x	x	x							764	si
	-> 7362.255	1830	1	1	1	1	1	1	1	1	1	1	1	1		

 **intermotor**
Motori serie 1 IM
1 IM series engines

vedi Tav. Ric.
 see Parts Table
 1.5302.485

Pos.	Matricola/Part No.	Note/Remarks	RESTYLING										vedi circolare tecnica see service letter	intercambiabilità interchangeability				
			1IM 250-251	1IM 252	1IM 300-301	1IM 302	1IM 350-351	1IM 352	1IM 359	1IM 359 "CEE"	1IM 250	1IM 300			1IM 350	1IM 359		
M 34	7362.187 540	per altern.luce for lighting alt.	1	1	1	1	1	1	1	1	1	1	1	1	1	1		
M 35	ex 5840.058 -> npd -> 5840.119 1470		x	x	x	x	x	x									747	si
M 36	4570.034 1580		1	1	1	1	1	1	1	1	1	1	1	1	1	1		
N 1	9760.017 9	M 4,2x19	-	-	-	-	-	-	-	3	-	-	-	-	-	-		
N 2	7625.003 9	d. 4x8	-	-	-	-	-	-	-	2	-	-	-	-	-	-		
N 3	8865.151 1580		-	-	-	-	-	-	-	1	-	-	-	-	-	-		
N 4	5981.058 1580		1	-	1	-	1	-	1	1	-	-	-	-	-	-		
N 5	3300.190 1470		2	2	2	2	2	2	2	2	2	2	2	2	2	2		
N 6	7986.024 1470		1	-	1	-	1	-	1	1	-	-	-	-	-	-		
N 7	9790.047 9	M 6x16	-	-	-	-	-	-	-	4	-	-	-	-	-	-		
N 8	7626.001 9	d.6,5x16	-	-	-	-	-	-	-	4	-	-	-	-	-	-		
N 9	8506.078 1580		1	1	1	1	1	1	1	1	-	-	-	-	-	-		
N 10	3617.172 1580		-	-	-	-	-	-	-	1	-	-	-	-	-	-		
N 11	8506.077 1580		1	1	1	1	1	1	1	1	-	-	-	-	-	-		
N 12	8345.038 1580		-	-	1	-	1	-	1	1	-	-	-	-	-	-		
N 13	2185.692 1580		-	-	1	-	1	-	1	1	-	-	-	-	-	-		

 **intermotor**
Motori serie 1 IM
1 IM series engines

vedi Tav. Ric.
 see Parts Table
 1.5302.485

RESTYLING

vedi
 circolare
 tecnica
 see
 service
 letter

intercambiabilità
 interchangeability

Pos. Matricola/Part No. Note/Remarks

1IM 250-251

1IM 252

1IM 300-301

1IM 302

1IM 350-351

1IM 352

1IM 353

1IM 359 "CEE"

1IM 250

1IM 300

1IM 350

1IM 359

TABELLA CARBURATORI vedi Circolare Tecnica 22005
CARBURETOR LIST see Service Letter 22005

Applicabilità Application	Antemodif./Prior to improv.					Postmodif./After improvem.			
	Motore Engine	Carburat Carburet	Tipo Type FVCA	Getto max. Main ject		Carburat Carburet	Tipo Type FVCA	Getto max. Main ject	
per filtro aria a secco for dry air cleaner	IM 250	2151.237	22-17	4126.017	90	2151.246	22-17	4126.077	94
	IM 300	"				"			
	IM 252	"				2151.247	22-17	4126.075	98
	IM 350	2151.239	24-19	4126.018	92	2151.246	22-17	4126.077	94
	IM 359	2151.236	26-21	4126.073	103	2151.249	24-19	4126.075	98
	IM 302	2151.237	22-17	4126.017	90	2151.247	22-17	4126.075	98
	IM 352	2151.239	24-19	4126.018	92	2151.250	24-19	4126.074	101
per filtro aria a bagno d'olio for oil bath air cleaner	IM 250	2151.237	22-17	4126.017	90	2151.237	22-17	4126.017	90
	IM 300	"				"			
	IM 350	2151.239	24-19	4126.018	92	"			
	IM 359	"				2151.248	24-19	4126.077	94
	IM 252	2151.237	22-17	4126.017	90	2151.246	22-17	4126.077	94
	IM 302	"				"			
per filtro aria a secco e starter a distanza for dry air cleaner and remote starter	IM 250	2151.199	22-17	4126.017	90	2151.251	22-17	4126.077	94
	IM 300	"				"			
	IM 350	2151.251	22-17	4126.077	94	"			
	IM 359	"				2151.254	24-19	4126.075	98
	IM 252	2151.199	22-17	4126.017	90	2151.252	22-17	4126.075	98
	IM 302	"				"			
per filtro aria a bagno d'olio e starter a distanza for oil bath air cleaner and remote starter	IM 250	2151.199	22-17	4126.017	90	2151.199	22-17	4126.017	90
	IM 300	"				"			
	IM 350	2151.251	22-17	4126.077	94	"			
	IM 359	"				2151.253	24-19	4126.075	98
	IM 252	2151.199	22-17	4126.017	90	2151.251	22-17	4126.077	94
	IM 302	"				"			
per filtro aria a secco e alim. a G.P.L. for dry air cleaner and L.P.G. feeding	IM 250	2151.228	22-17	4126.017	90	2151.256	22-17	4126.077	94
	IM 300	"				"			
	IM 350	2151.229	24-19	4126.018	92	"			
	IM 359	2151.245	26-21	4126.073	103	2151.259	24-19	4126.075	98
	IM 252	2151.228	22-17	4126.017	90	2151.257	22-17	4126.075	98
	IM 302	"				"			
per filtro aria a bagno d'olio e alim. a G.P.L. for oil bath air cleaner and L.P.G. feeding	IM 250	2151.228	22-17	4126.017	90	2151.228	22-17	4126.017	90
	IM 300	"				"			
	IM 350	2151.229	24-19	4126.018	92	"			
	IM 359	"				2151.258	24-19	4126.077	94
	IM 252	2151.228	22-17	4126.017	90	2151.256	22-17	4126.077	94
	IM 302	"				"			
IM 352	2151.229	24-19	4126.018	92	2151.258	24-19	4126.077	94	

fine/end

Nummernänderungen aus Ersatzteilliste 5302.485
Serie 1.IM, standard & restyling

Alte Ersatzteilnummer	Neue Ersatzteilnummer
1755-014-9	1755-019-9
2151-256-147	2151-237-1550
6927-291-1470	6927-294-147
7540-010-147	7565-015-9
9375-934-158	9375-196-7000
9375-935-158	9375-196-7000
9375-936-158	9375-196-7000
9731-085-9	9732-078-9

* Bitte der Ersatzteilliste beifügen *



LOMBARDINI Motoren GmbH

Berner Straße 54, 60437 Frankfurt/M
Tel: 069/95081613 Fax: 069/95081630

Telefax

Page/Seite: 1

Von/From : Jürgen Edelmann

Datum/Date : 12.04.00

An/ To : Lombardini Motori / Spare Parts Dept.

Seiten/Pages : 1 + 1

Betreff/Subject : IM Restyling - Carburetor parts from drawing H

URGENT !

Att.: Mrs. Marisa

ATTN HR EDELMANN

Our customer Caldic ask about the following parts-no. from Table 1.5302.485 ,
to order this parts.

↓ SIZE

- H-33 4126.080 (0,75) 4126.081 (0,78) 4126.082 (0,88)
- H-34 6100.042
- H-35 4105.022
- H-36 9850.127
- H-37 4126.084
- H-38 9710.117

BST RLDS
PARTS DEPT
MRS MARISA
.13/4/00

Thanks and regards

J.Edelmann